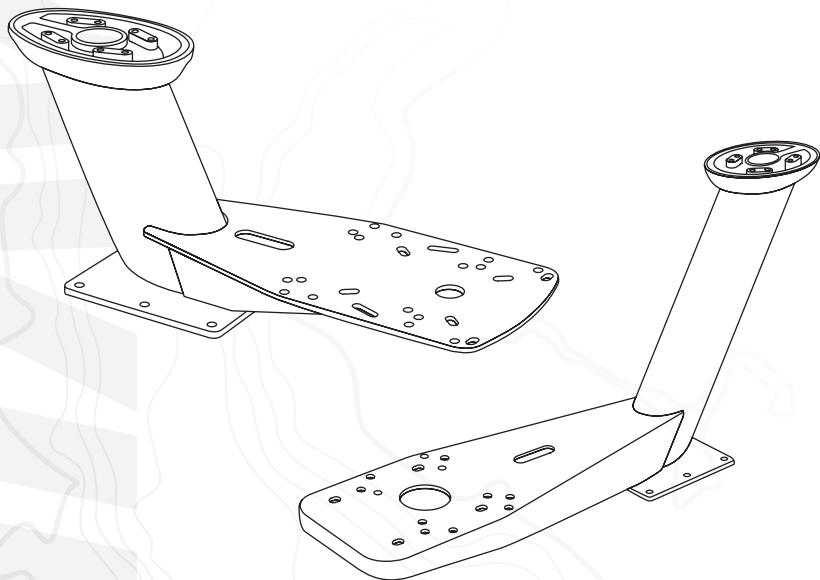


SEAVIEW

ELEVATE YOUR ELECTRONICS



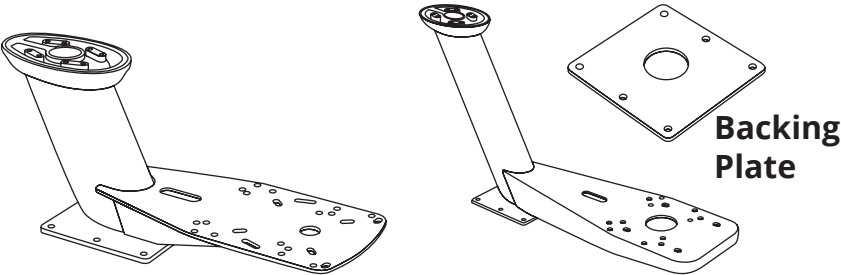
INSTALLATION INSTRUCTIONS

For Seaview Modular Dual Mounts:

PMA-DM1-M2, PMA-DM2-M2

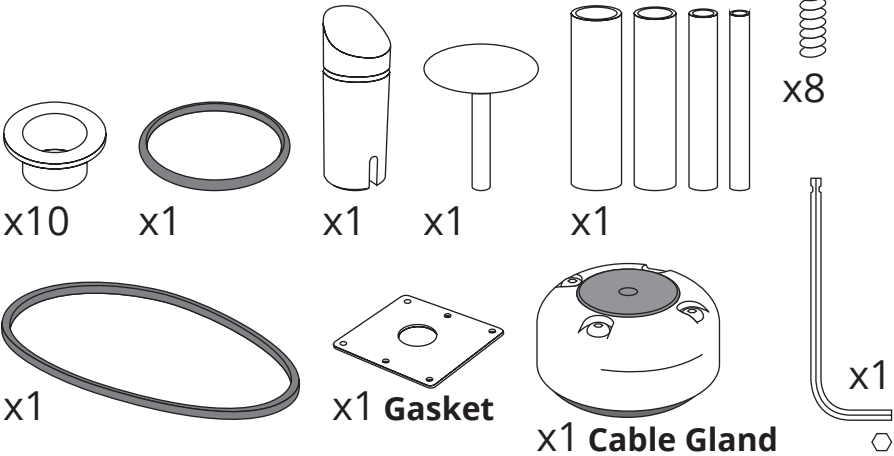
Refer to website for most up to
date instructions and videos.

PARTS INCLUDED



x1 PMA-M1-M2

x1 PMA-M2-M2

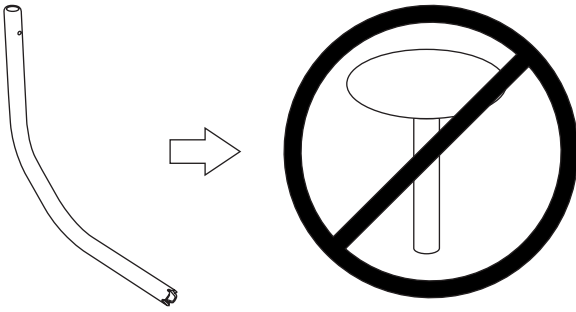


TOOLS NEEDED



1

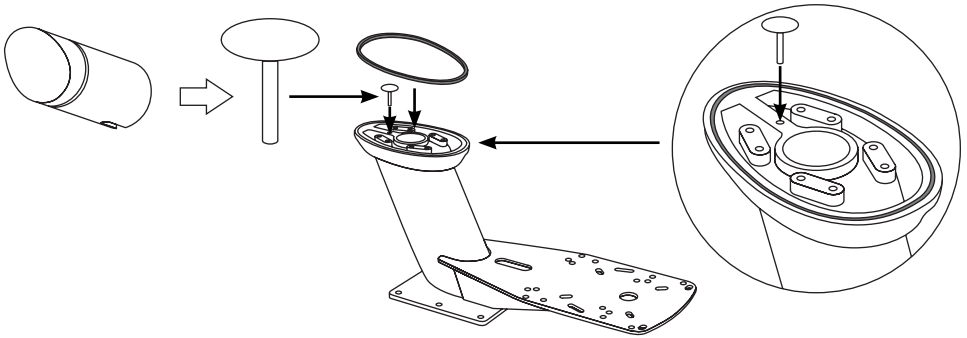
If you are using a Seaview Light Bar with your Dual Mount you do not use the pin.



2

If you are not using a Seaview Light Bar then insert the pin as shown below. Insert the white Light Bar Plug and o-ring into the Light Bar hole in the back of the mount. Make sure it clips onto the pin.

Place the rubber gasket onto the top of the Dual Mount as shown.

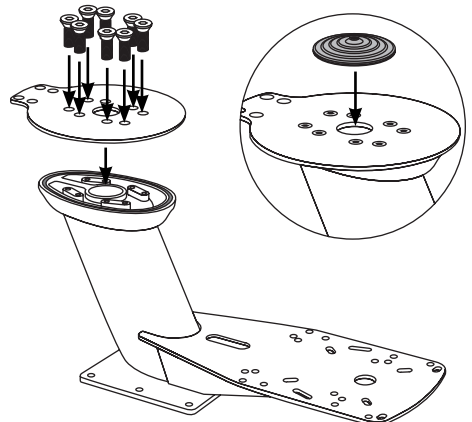


3

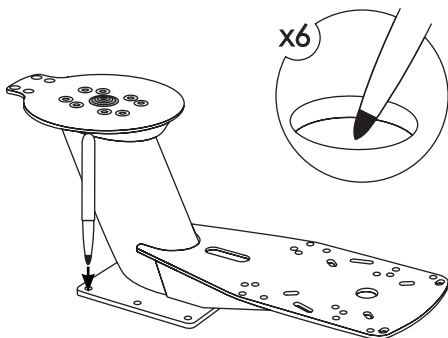
Mount the Seaview Modular Top Plate to the Dual Mount with the eight bolts that come with the Modular Top Plate.

Then insert the rubber cable grommet into the Modular Top Plate.

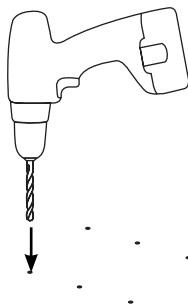
Refer to the provided Seaview Top Plate installation instructions for more information.



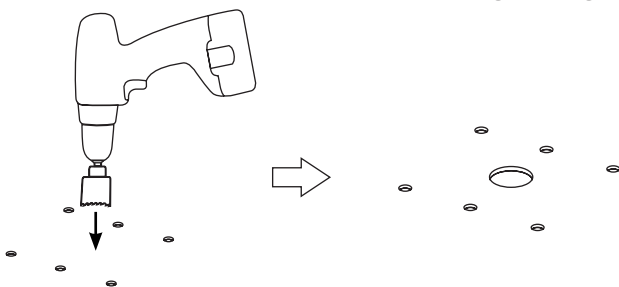
4 Place the Dual Mount onto the mounting surface and mark the six bolt holes.



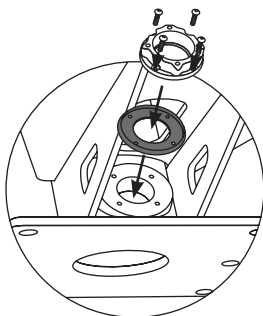
5 Drill the six bolt holes.



6 Using a hole saw, drill a hole to run the cabling through.

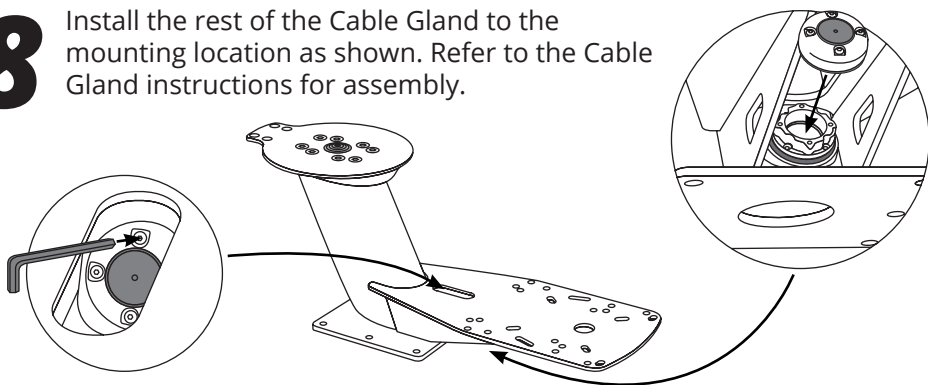


7 Secure the rubber gasket and white plastic base to the Dual Mount using four screws.



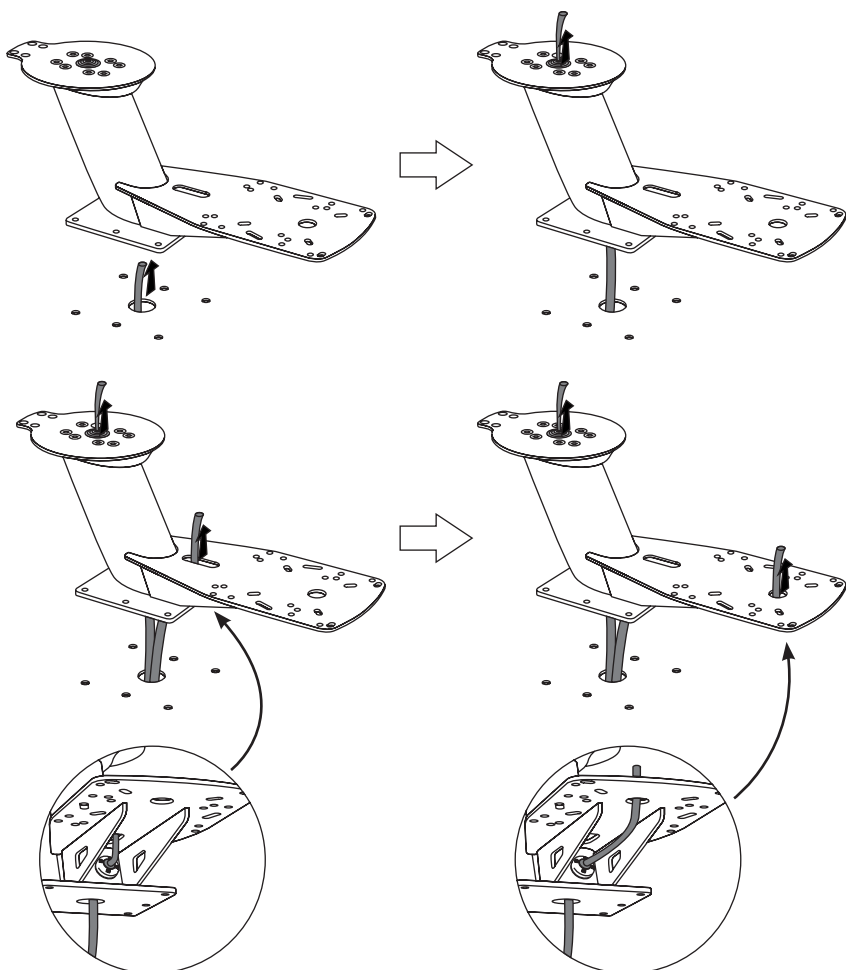
8

Install the rest of the Cable Gland to the mounting location as shown. Refer to the Cable Gland instructions for assembly.

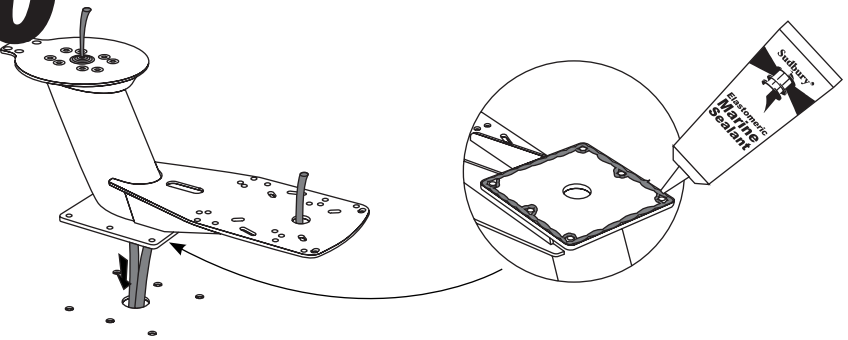


9

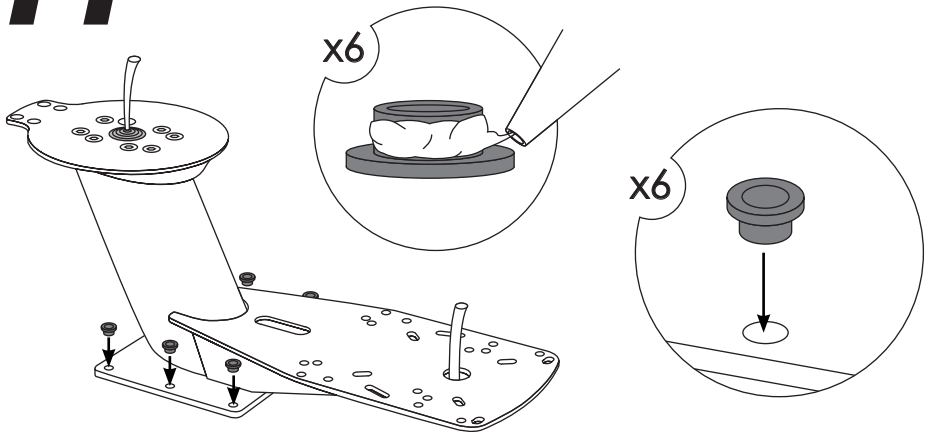
Route all cables through the Dual Mount.



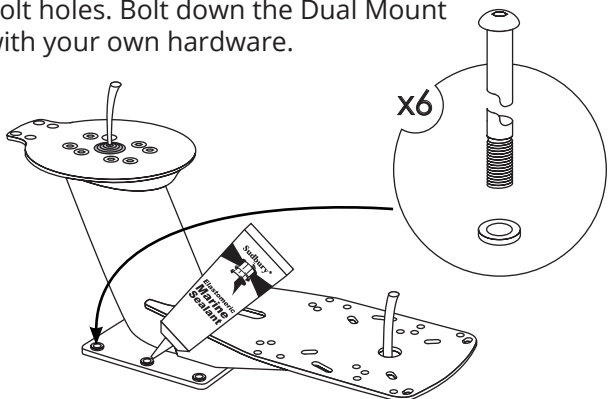
10 Apply marine adhesive sealant to the base of the mount.



11 Apply marine adhesive sealant to the six nylon shoulder washers. Then insert them into the base of the mount.

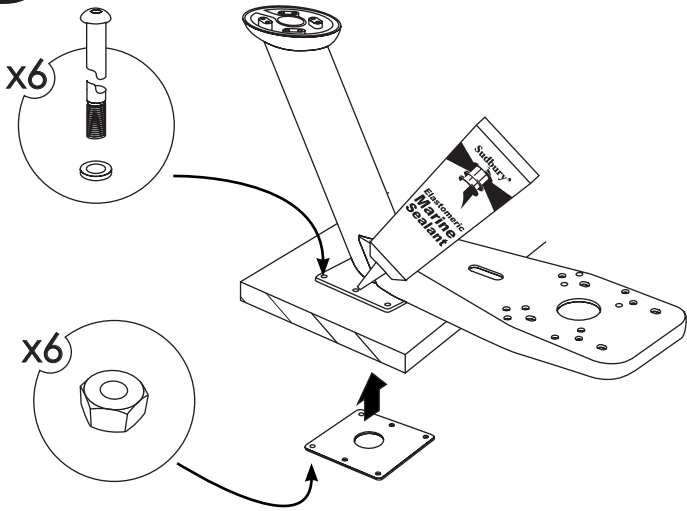


12A Apply marine adhesive sealant to all bolt holes. Bolt down the Dual Mount with your own hardware.



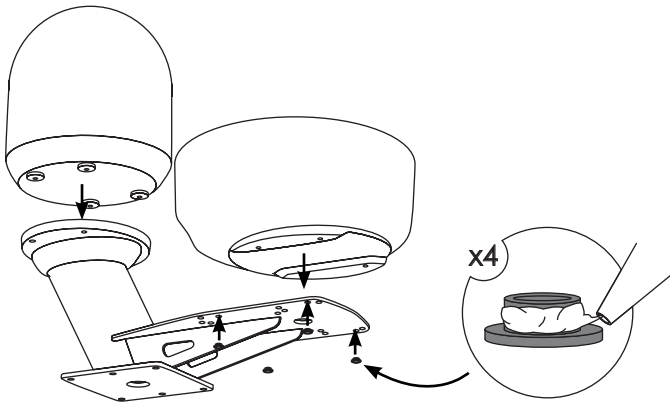
12B

For the Seaview Dual Mount #PMA-DM2-M2, use the provided backing plate. Apply marine adhesive sealant to all bolt holes.



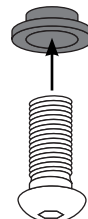
13

Apply marine adhesive sealant to four nylon shoulder washers. Then insert them into the lower platform. Be sure to insert them into the correct holes for your radar.



14

Use the hardware provided with your electronics to secure.



The background of the entire page is a light gray topographic map with white contour lines. The lines are irregular and wavy, creating a sense of depth and movement. The map covers the entire area, with the text elements overlaid on it.

SEAVIEW///

ELEVATE YOUR ELECTRONICS

SEAVIEW///

Tel: 800-655-7922
www.seaviewglobal.com

EUROPEAN OFFICE

Tel: +33 4 94 53 27 70
www.seaviewprogress.com

2-102418