

RETROFIT CABLE GLAND INSTRUCTIONS

SEAVIEW

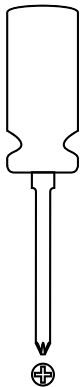
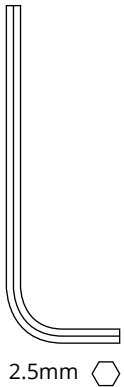
For Part Numbers:

CG20PG2 | CG30PG2

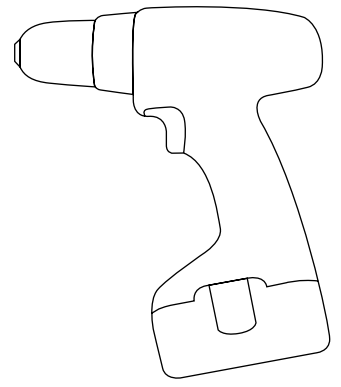
Refer to website for most up to date instructions and videos.

www.seaviewglobal.com

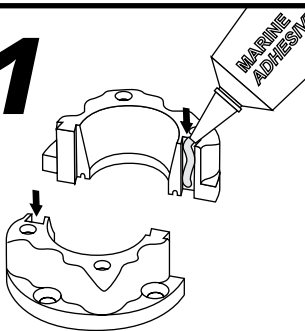
TOOLS NEEDED



Sudbury Elastomeric Marine Sealant is recommended. To purchase call 800-655-7922 or visit www.seaviewglobal.com

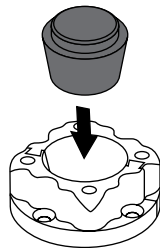


1



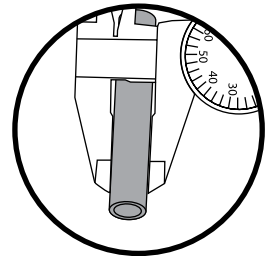
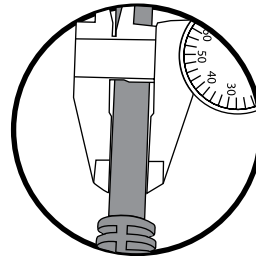
Apply marine adhesive sealant to the grooves of the plastic base. And then combine the two halves.

2



Insert the rubber tapered plug into the base.

3



Measure your cable diameter and select the appropriate drill tube provided.

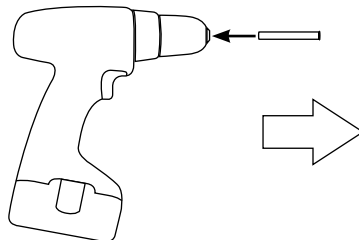
4A

1



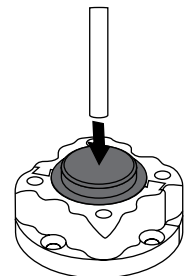
Take one of the four drill tubes (included with the Retrofit Cable Gland). Double check to make sure the tube is the right diameter for your installation.

2



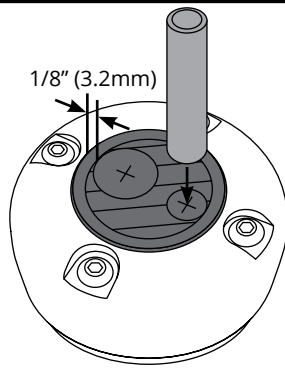
Insert drill tube into drill motor, and leave enough length to get through the tapered plug.

3



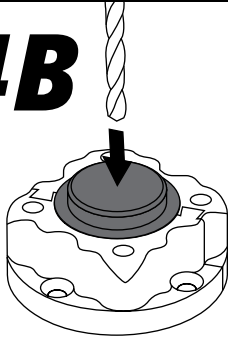
Apply small amount of soapy water to the tube and slowly drill the Cable Gland.

TIP#1



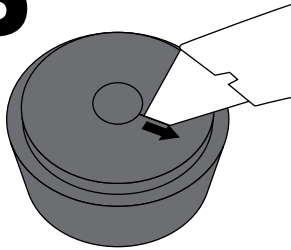
- Make sure that you do not drill within 1/8" (3.2mm) from the edge of the tapered plug.
- A slightly larger drill bit is needed for drilling the rubber.

4B



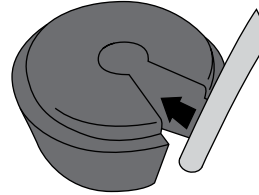
If using the a drill bit, the drill should be run repeatedly through the rubber.

5



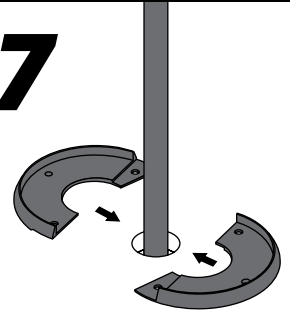
Using a sharp razor blade or knife, cut the rubber grommet from the cable hole outward.

6



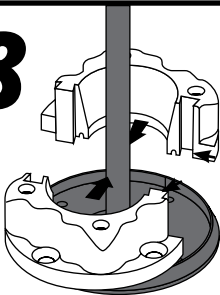
Wrap the rubber grommet around the electronic cable.

7



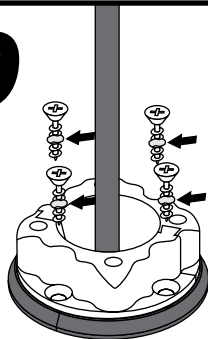
Apply the rubber base gasket to the mounting surface.

8



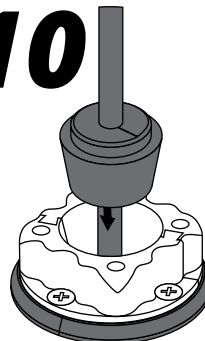
Combine the two halves of the plastic base and mount onto rubber base gasket. Be sure to stagger the seams as shown by the two black arrows.

9



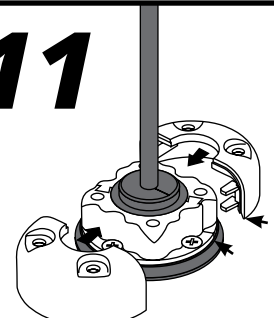
Secure the base to the mounting surface with the four screws. Apply marine adhesive sealant to the threads.

10



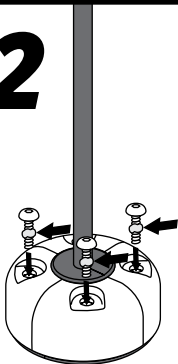
Slide the rubber plug down into the plastic base.

11



Combine the two halves of the outer shell. Be sure to stagger the seams as shown by the two black arrows.

12



Apply marine adhesive sealant to the four allen head screws and tighten.

SEAVIEW

800-655-7922

www.seaviewglobal.com