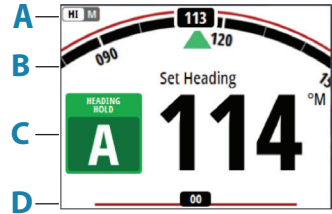


1	<p>Power key</p> <ul style="list-style-type: none"> Press to show the Display setup dialog. Repeat short presses to toggle preset light levels Press and hold to put the autopilot system to Sleep mode. Repress the key to activate the system
2	<p>MENU key</p> <p>Press to show the Settings menu.</p>
3	<p>X key</p> <p>Press to return to previous menu level or to exit a dialog.</p>
4	<p>Rotary knob</p> <p>Menu and dialog operation:</p> <ul style="list-style-type: none"> Turn to move up and down in menus and dialogs Turn to adjust a value Press to select a menu option and to enter the next menu level <p>For mode operation refer to the autopilot modes table.</p>
5-8	<p>< 10, < 1 and 1 >, 10 > (Port and starboard keys)</p> <p>Press to change the set heading/set course/set wind angle 1° or 10° to port or starboard.</p> <p>For mode operation refer to the autopilot modes table.</p>
9	<p>STBY key</p> <p>Press to activate Standby mode.</p>
10	<p>MODE key</p> <p>Press to show the Mode list.</p>
11	<p>AUTO key</p> <p>Press to activate Auto mode.</p>

The autopilot page

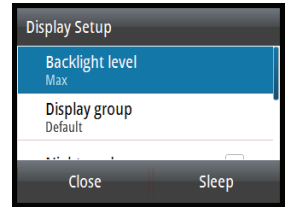
The content varies with active mode. All modes include:

- A** Response (AC12N/AC42N/SG05) / Profile (NAC-2/ NAC-3) mode
- B** Heading indicator, analog and digital
- C** Autopilot mode indication
- D** Rudder indicator, analog and digital



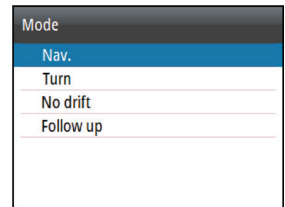
Display setup

Display Setup dialog activated by pressing the power key. When the Backlight level field is active, subsequent presses on the power key adjusts backlight level in decrements of 30%.

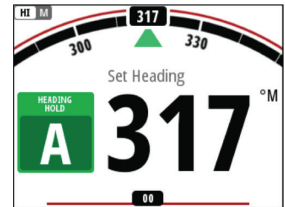
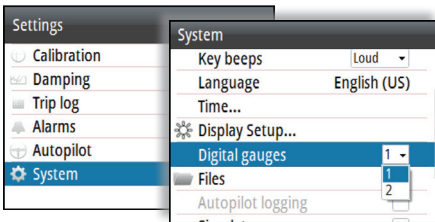


Selecting an autopilot mode using the MODE key

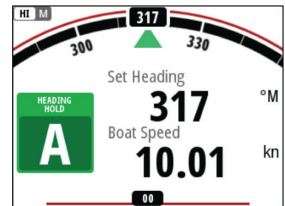
You select other modes and automatic features by selecting the relevant option from the Mode list, activated by pressing the **MODE** key.



Digital gauges













One gauge



Two gauges

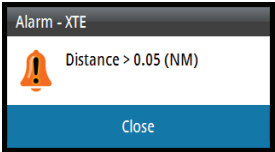
Autopilot modes

Mode	Activate	Rotary knob	Port and starboard keys
Standby 		Press to activate FU mode.	Press to activate NFU mode.
Follow-up 	From any mode: select the Follow-up option in the Mode list. From Standby mode: press the rotary knob.	Rotate to adjust the rudder angle.	Press to activate NFU mode.
Non Follow-up 	Switch to NFU mode by pressing one of the port or starboard keys when the autopilot is in Standby mode or FU mode.	Press to activate FU mode.	Press to adjust the rudder angle.
AUTO 		Rotate to adjust the set heading.	Press to adjust the set heading.
Wind 	From any mode: select the Wind option in the Mode list. → Note: Only available when boat type is set to SAIL.	Rotate to adjust the set wind angle.	Press to adjust the set wind angle.
Wind NAV 	From any mode: select the Wind NAV option in the Mode list. → Note: Only available with AC12/42 autopilot computers when the boat type is set to SAIL. Not available with NAC-2 or NAC-3 autopilot computers.	Rotate to adjust the set wind angle.	Press to adjust the set wind angle.
NAV 	From any mode: select the NAV option in the Mode list. → Note: NAV mode requires a compatible chartplotter connected to the network.	No action.	No action.
NoDrift 	From any mode: select the NoDrift option in the Mode list.	Rotate to adjust the set heading.	Press to adjust the set heading.

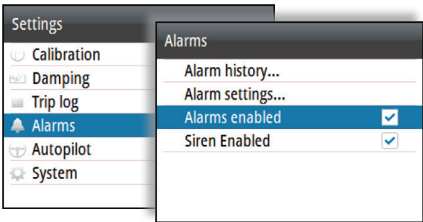
Alarms

Acknowledging the alarms

The most recent alarm is acknowledged by pressing the rotary knob.



Enabling the alarm system and the alarm siren



Accessing the device list

