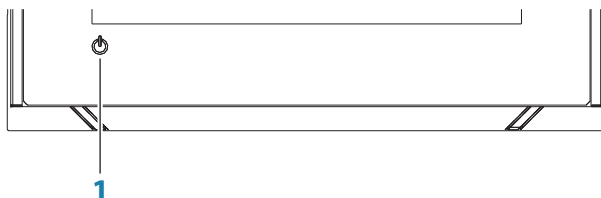


## Front panel



No.	Key	Function
1	Power	Press once to display the System control dialog. Press and hold to turn the unit ON/OFF.

## The System controls dialog

Used for quick access to system settings.

Activate the dialog by:

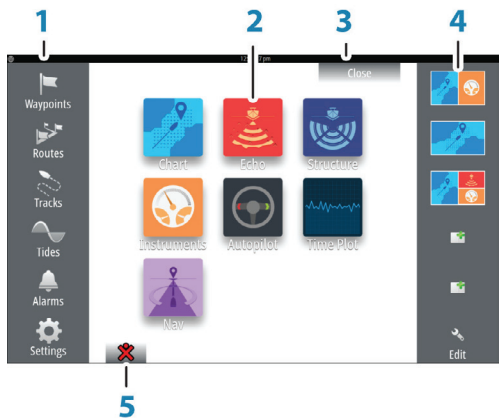
- Pressing the Power key.
- Swiping from the top of the screen.



→ **Note:** The adjust splits option is only available if you are viewing a split page.

# The Home page

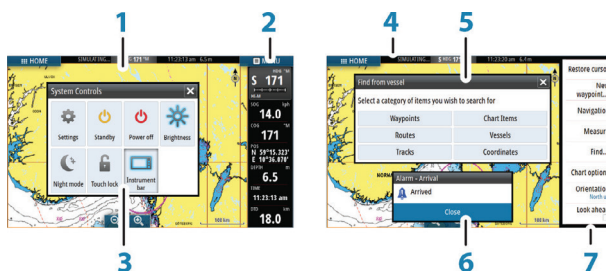
Accessed from any operation by selecting the Home button in the upper left corner of a panel.



No.	Item	Function
1	Tools	Select a button to access dialogs used for carrying out a task, or for browsing stored information.
2	Applications	Select a button to display the application as a full page panel. Press and hold a button to display pre-configured split page options for the application.
3	Close button	Select to exit the Home page and return to the previous active page.
4	Favorites	Select a button to display the panel combination. Press and hold a favorite button to enter edit mode for the Favorites panel.
5	Man Over Board (MOB) button	Select to save a Man Over Board (MOB) waypoint at the current vessel position.

## Application pages

Each application connected to the system is presented on panels. All application pages are accessed from the Home page.

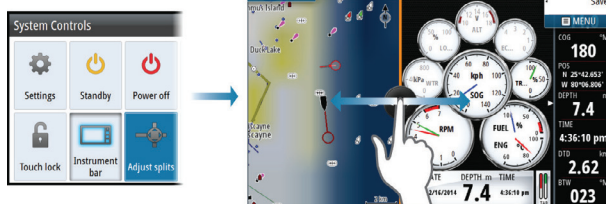


No.	Item
1	Application panel
2	Instrument bar
3	System controls dialog
4	Status bar
5	Dialog
6	Alarm message
7	Menu

## Adjust panel size

Change the panel size for an active split page:

1. Activate the System Controls dialog
2. Select the adjust splits option in the dialog
3. Adjust the panel size by dragging the adjustment icon
4. Confirm your changes by tapping one of the panels or selecting the save option in the menu



## Charts

- Zoom the chart by using spread or pinch gestures, by using the zoom buttons (A).
- Move the view in any direction by panning the chart.
- Display information about a chart item by tapping the item.



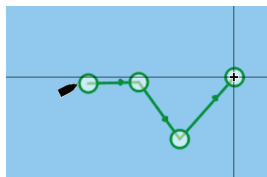
## Waypoints

Save a waypoint at a selected location by positioning the cursor on the panel, and then selecting the new waypoint option in the menu.

## Routes

To create a route:

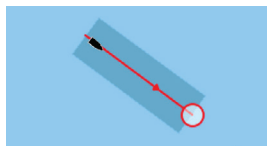
1. Tap the screen
2. Select the new route option in the menu
3. Tap the chart to position the first routepoint
4. Continue tapping the screen to position additional waypoints
5. Save the route by selecting the save option from the menu



## Navigating

To navigate to cursor position:

1. Tap the screen to position the cursor
2. Select the goto cursor option in the menu



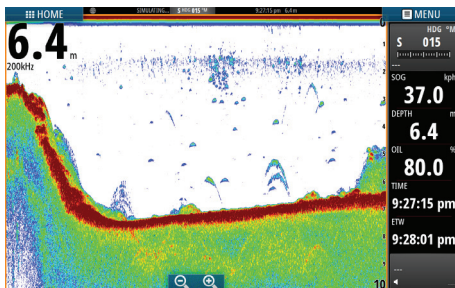
Navigate a predefined route by:

- Tapping the route to make it active, then selecting the start option in the menu.
- Selecting the route from the Routes dialog, then selecting the start option in the dialog.



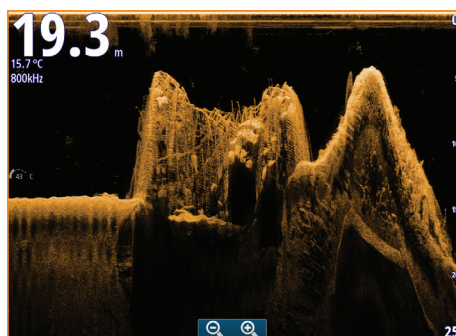
## Echosounder

- Zoom the image by tapping the zoom buttons.
- View echosounder history by panning the image.
- Adjust gain and color using the slide bar in the menu.
- Toggle auto gain ON/OFF from the menu.

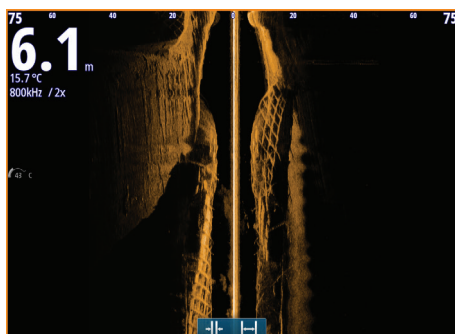


## StructureScan

- Select DownScan or left/right SideScan view from the menu.
- Zoom a StructureScan image by using the panel zoom icons, or by pinching or spreading on the screen.
- Pan the image history by dragging up/down (SideScan) or left/right (DownScan).
- Adjust the contrast setting:
  1. Select the contrast icon or activate the contrast option in the menu to display the color adjustment bar
  2. Drag the bar up or down to get the desired contrast setting or select Auto contrast
- Toggle between available StructureScan frequencies from the menu.



DownScan

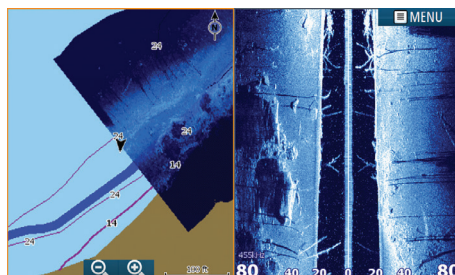


SideScan

455 kHz	provides ideal range and image quality in most situations
800 kHz	provides higher detail in shallow water

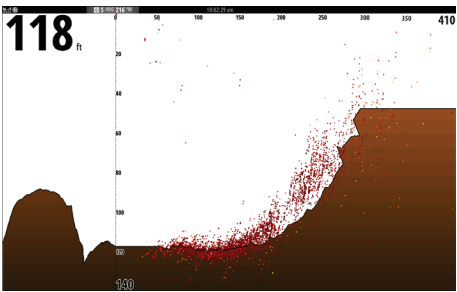
## StructureMap

- Turn on Structure overlay from the chart menu.
- Adjust the StructureMap settings from the Structure options menu.



# ForwardScan

- Adjust depth, range and noise rejection from the menu.
- Start recording ForwardScan logs from the menu.
- Use the heading extension to monitor ForwardScan on the chart panel. Heading extension colors are based on the ForwardScan alarm values.



# Autopilot

Activate the autopilot from any panel by selecting the autopilot tile in the Instrument bar, followed by selecting a mode in the Autopilot Controller.



S	Standby	Autopilot is passive. Used when manually steering at the helm.
FU	Follow-up	Manual steering using the rotary knob on a remote autopilot controller to control the rudder angle.
NFU	Non-Follow-up	Manual steering. The rudder movement is controlled by the <b>Port</b> and <b>Starboard</b> buttons in the autopilot pop-up, or by another NFU unit.
A	Auto	Automatic steering, maintaining the set heading.
No	NoDrift	Automatic steering, keeping the vessel on a straight bearing line by compensating for drift.
N	Navigation	Automatic steering, navigating the vessel to a specific waypoint or through a route using GPS data.
W	Wind *	Automatic steering, maintaining the set wind angle.

<b>W<sub>N</sub></b>	Wind navigation *	Automatic steering, navigating the vessel to a specific waypoint or through a route using both wind and GPS data.
----------------------	-------------------	---

\* Only available if the boat type is set to Sailboat.

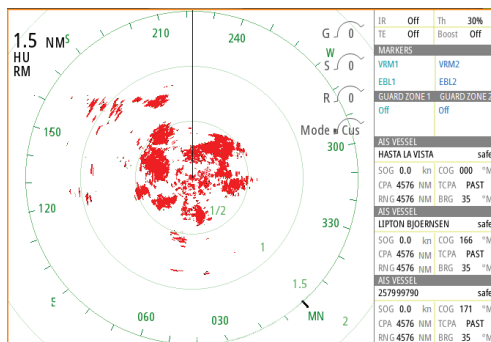
## Switching from automatic mode to manual steering

Switch the autopilot to STBY mode from any automatic operation mode from the autopilot pop-up or using a physical standby key.

## Radar

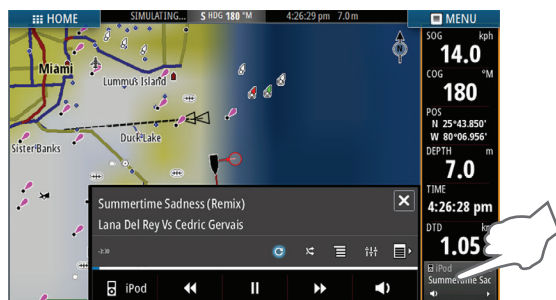
Not available on the 5" and 7" units.

- Turn the radar transmitting on/off from the menu.
- Adjust radar range by selecting the zoom icons on the radar panel.



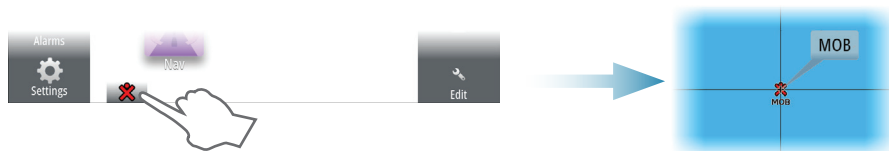
## Audio

Activate the audio panel by activating the audio tile in the Instrument bar.



## Positioning a MOB mark

Save a Man Over Board (MOB) mark at vessel position by tapping the MOB button on the Home page.



## Viewing the manual on the screen

The PDF viewer included in the unit makes it possible to read the manuals and other PDF files on the screen.

Manuals can be downloaded from [www.simrad-yachting.com](http://www.simrad-yachting.com)

For more details, see the Go XSE Operator manual.